

Sønderborg-modellen:

Since 2007, we have worked in the rural area according to a model called the 'Sønderborg model', where we work together according to agreed, simple rules.



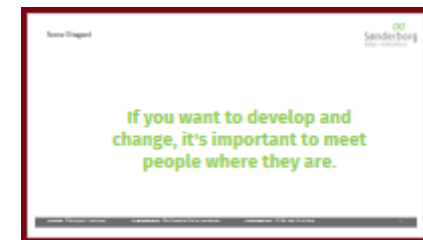
To facilitate the understanding of our organisation in the rural area, I will show a model with the following concepts:

- **A Village Council** is the term for the local organisation of the citizens of the village who have democratically elected a board to take care of what they agree is best for the citizens of the village. Each village has created a local development plan for how they see themselves in the future and what they need to do to achieve their goals together.
- **Association of Village councils** is a voluntary dialogue forum where the 37 village councils meet to spar, exchange experiences and carry out common tasks on behalf of the community.
- **The Committee for Sustainability and Rural Areas** is the political committee focusing on sustainability and rural areas. It consists of 5 elected politicians and 7 volunteers from 7 geographical areas covering a number of village associations. We have a vision of vibrant villages with a high level of activity, quality of life and attractive living environments.

The picture behind me shows our Sønderborg model:



The purpose of my committee is to ensure that the municipality fulfils the SDGs by 2030 at the latest, based on the municipality's Sustainability Policy. The committee must also drive and coordinate rural development in Sønderborg Municipality, but also support citizenship and community between villages/districts, administration and politicians, as well as create unity and coherence in the efforts.



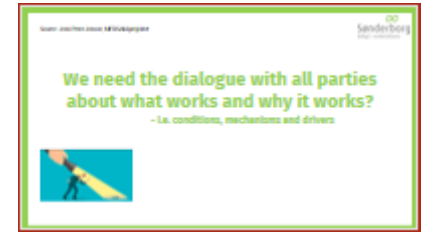
The slide shows the focus areas that we work with local projects in the villages, which can be about culture, nature, cross-community activities and themes that promote quality of life. Each village has its own local development plan that shows the way and how the locals can achieve their goals together.

The Association of Village councils: create dialogue and results in tourism, decentralised decisions or good hospitality.



Our policy committees work on themes such as lifelong learning, holistic thinking and cross-collaboration, as well as acting as a facilitator for sustainable food, increased biodiversity, nature mobility and international collaborations

The municipality must lead, be equal or take a back seat. We need the dialogue with all parties about what works and why it works? We try to find what works so we can scale it up



We think in terms of resource mobilisation: that is, with municipal employees through trust-based management. With businesses through partnerships. Citizens and civil society through co-creation.



We have an interest in getting better at achieving what we set out to achieve (i.e. the goal). This is true for the citizens of the village, the administration and the politicians. When we know what we want to be better at, it's easier to get started and stay focused. And we can all get better.

Now I'll pass the floor to an introduction of our guests: the volunteers who provide examples of how the model works.